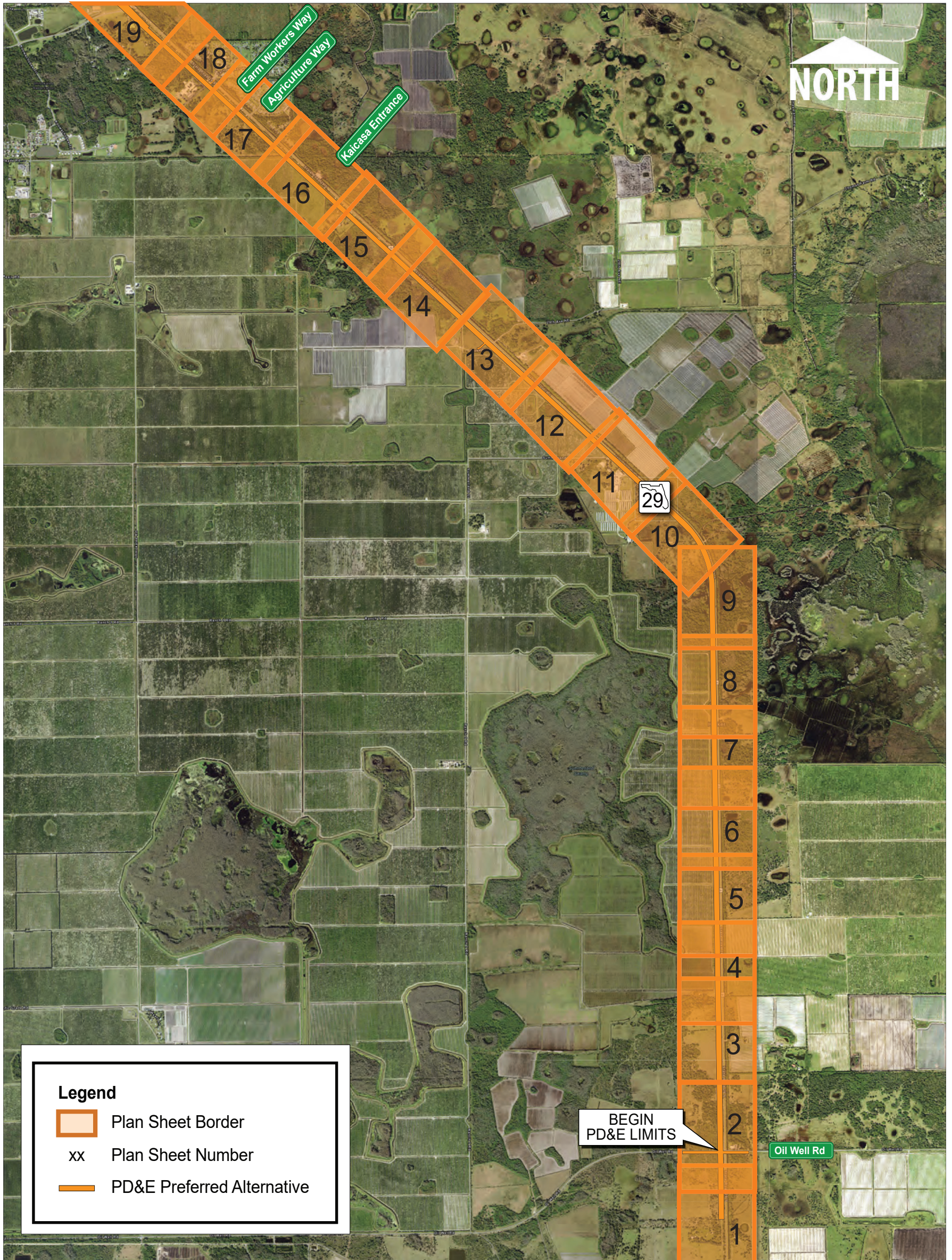
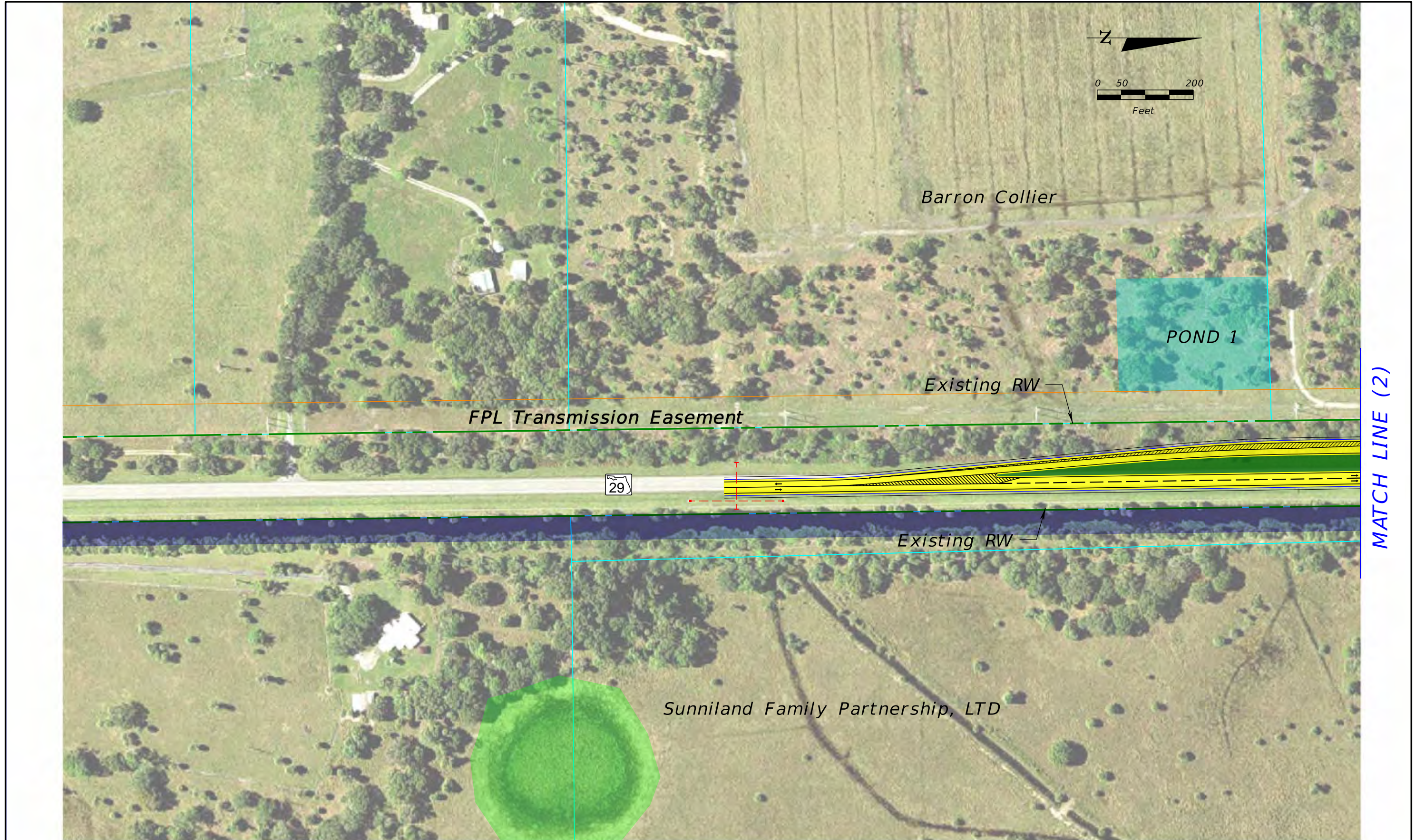


Concept Plan Sheets: South of CR 846





SR 29 PD&E Study
 From Oil Well Road to SR 82
 FPID NO: 417540 1 22 01 / FAP NO: 3911 022 P

- Existing Right-of-Way
- Parcels
- Proposed Right-of-Way
- Water/Canal
- Wetland

- Proposed Pond
- Potential Pond
- Potential Floodplain Compensation
- Traffic Signal

Legend

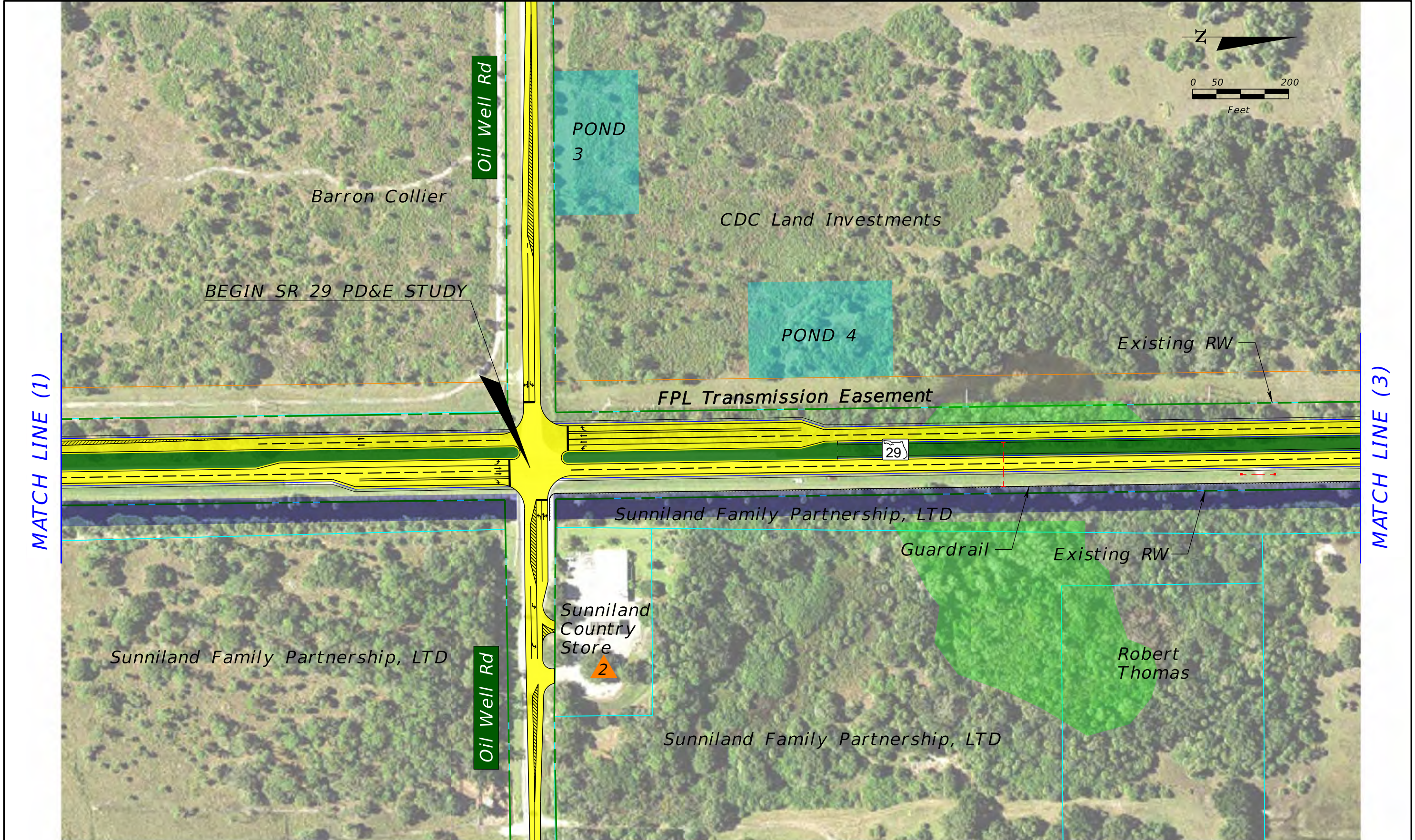
- Proposed Pavement
- Proposed Median/Border
- Proposed Sidewalks/Shared Use Path
- Proposed Traffic Separator
- Existing Drainage Structure

- Proposed Guardrail
- Potential Business Relocation
- Potential Contamination (Low)
- Potential Contamination (Medium or High)

H. W. Lochner, Inc.
 4300 W. Cypress St., Suite 500
 Tampa, Florida 33607
 FBPR Certificate of Auth. #894

Preferred Alternative

Sheet No.
1



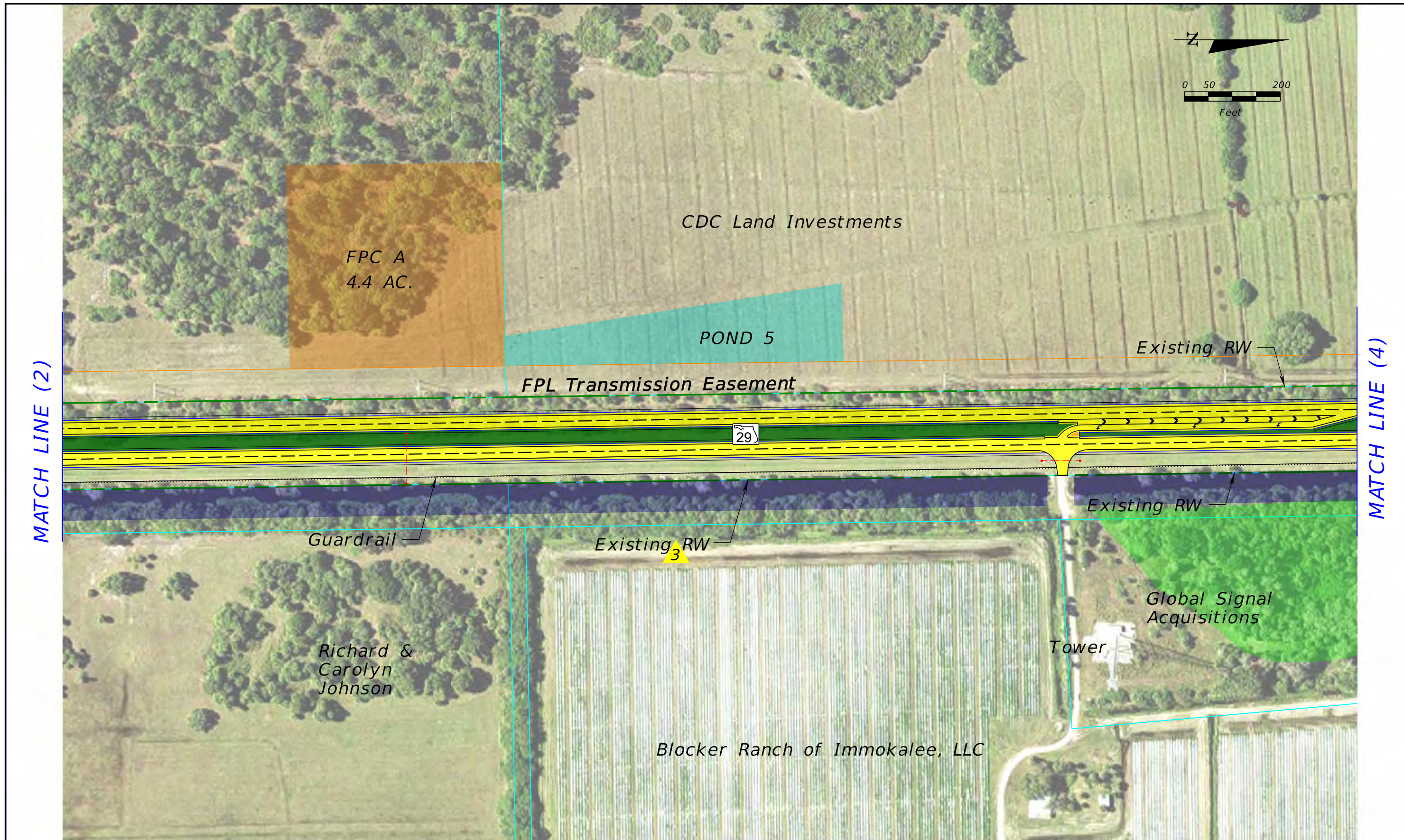
SR 29 PD&E Study
 From Oil Well Road to SR 82
 FPID NO: 417540 1 22 01 / FAP NO: 3911 022 P

Legend	
Existing Right-of-Way	Proposed Pond
Parcels	Potential Pond
Proposed Right-of-Way	Potential Floodplain Compensation
Water/Canal	Traffic Signal
Wetland	Proposed Pavement
	Proposed Median/Border
	Proposed Sidewalks/ Shared Use Path
	Proposed Traffic Separator
	Existing Drainage Structure
	Proposed Guardrail
	Potential Business Relocation
	Potential Contamination (Low)
	Potential Contamination (Medium or High)

H. W. Lochner, Inc.
 4300 W. Cypress St., Suite 500
 Tampa, Florida 33607
 FBPR Certificate of Auth. #894

Preferred Alternative

Sheet No.
2



SR 29 PD&E Study
 From Oil Well Road to SR 82
 FPID NO: 417540 1 22 01 / FAP NO: 3911 022 P

Legend			
	Existing Right-of-Way		Proposed Pond
	Parcels		Potential Pond
	Proposed Right-of-Way		Potential Floodplain Compensation
	Water/Canal		Traffic Signal
	Wetland		Proposed Pavement
			Proposed Median/Border
			Proposed Sidewalks/ Shared Use Path
			Proposed Traffic Separator
			Existing Drainage Structure
			Proposed Guardrail
			Potential Business Relocation
			Potential Contamination (Low)
			Potential Contamination (Medium or High)

H. W. Lochner, Inc.
 4300 W. Cypress St., Suite 500
 Tampa, Florida 33607
 FBPR Certificate of Auth. #894

Preferred Alternative

Sheet No.
3



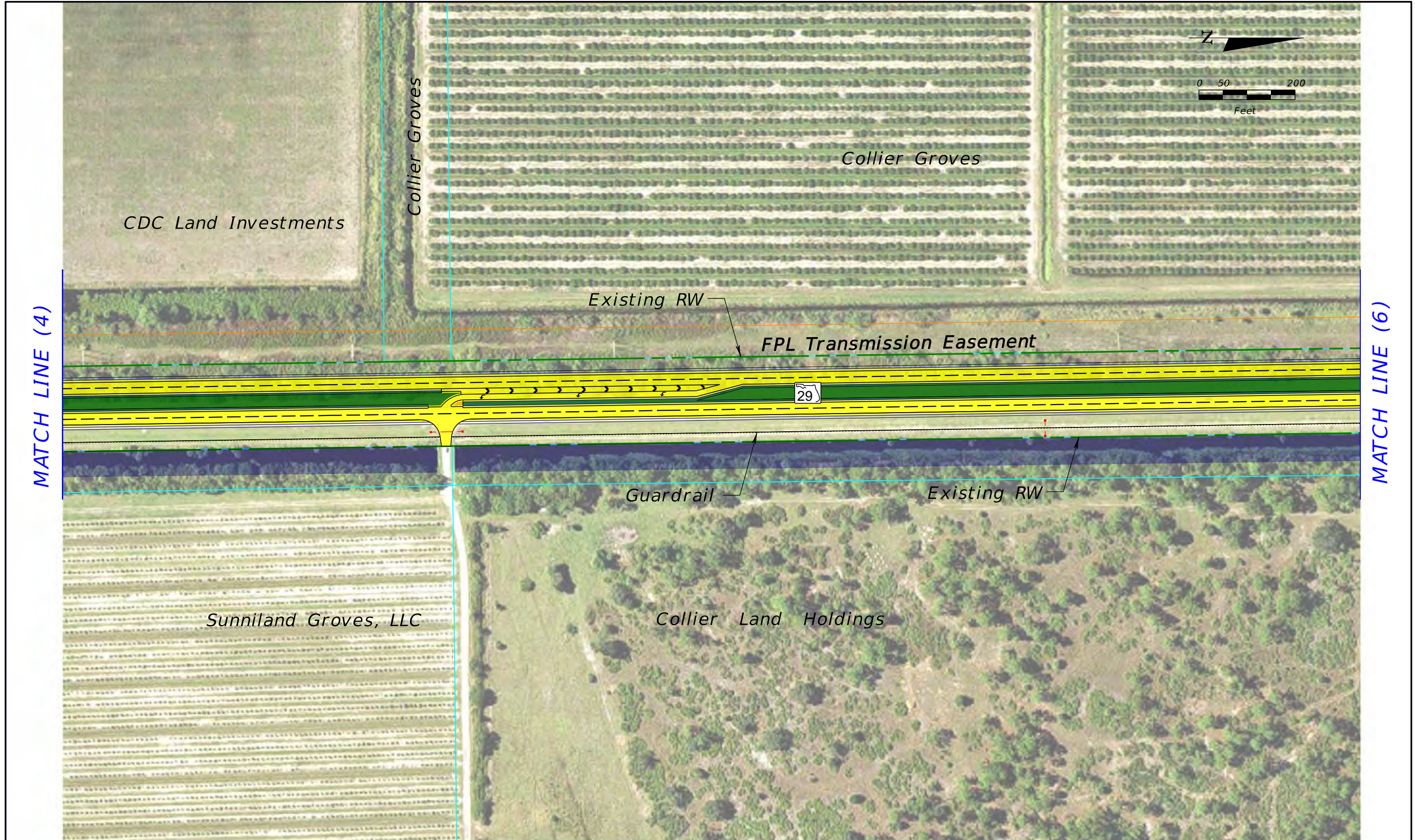
SR 29 PD&E Study
 From Oil Well Road to SR 82
 FPID NO: 417540 1 22 01 / FAP NO: 3911 022 P

Legend	
	Existing Right-of-Way
	Proposed Right-of-Way
	Water/Canal
	Wetland
	Proposed Pond
	Potential Pond
	Potential Floodplain Compensation
	Traffic Signal
	Proposed Pavement
	Proposed Median/Border
	Proposed Sidewalks/ Shared Use Path
	Proposed Traffic Separator
	Existing Drainage Structure
	Proposed Guardrail
	Potential Business Relocation
	Potential Contamination (Low)
	Potential Contamination (Medium or High)

H. W. Lochner, Inc.
 4300 W. Cypress St., Suite 500
 Tampa, Florida 33607
 FBPR Certificate of Auth. #894

Preferred Alternative

Sheet No.
4



SR 29 PD&E Study
 From Oil Well Road to SR 82
 FPID NO: 417540 1 22 01 / FAP NO: 3911 022 P

- Existing Right-of-Way
- Parcels
- Proposed Right-of-Way
- Water/Canal
- Wetland

- Proposed Pond
- Potential Pond
- Potential Floodplain Compensation
- Traffic Signal

Legend

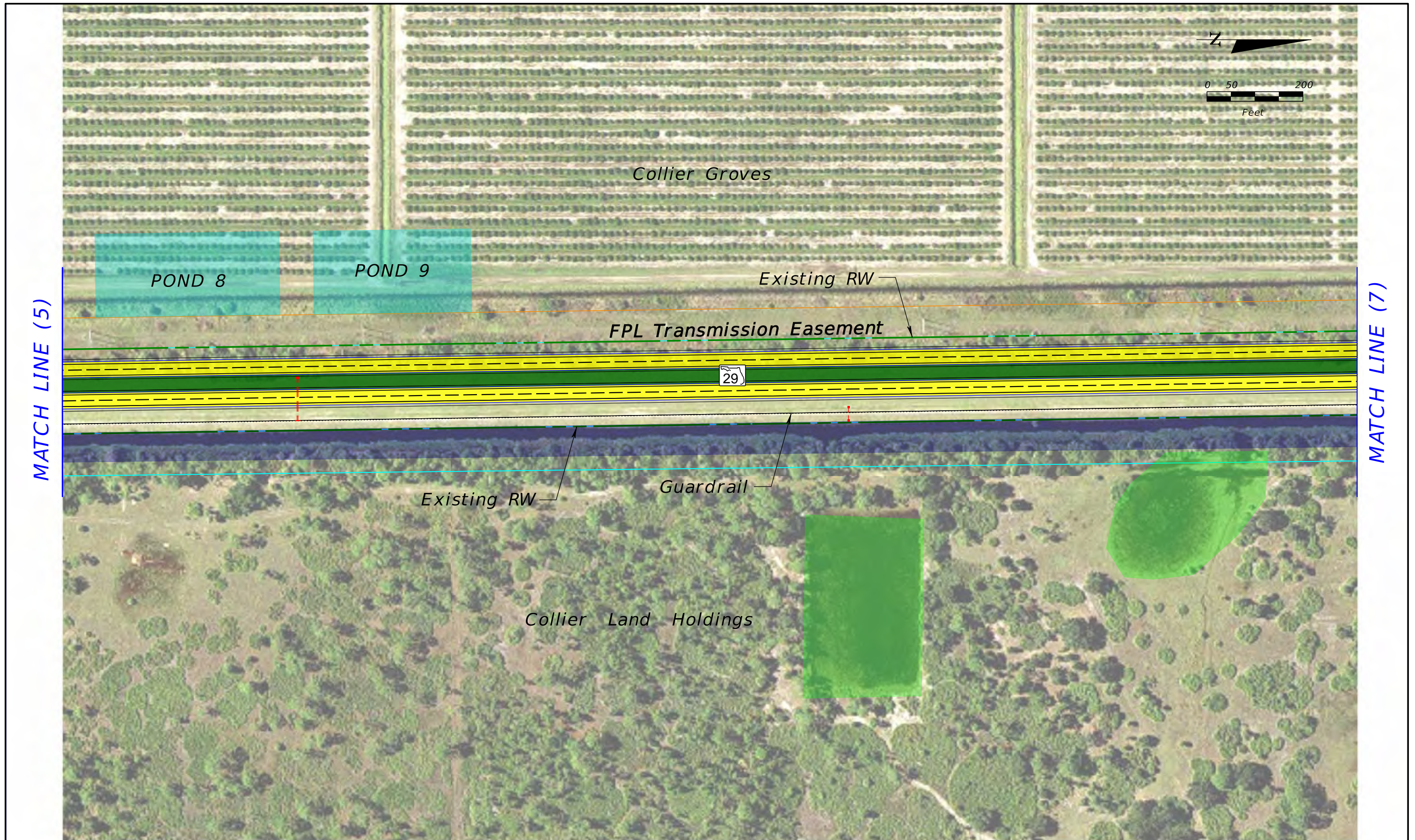
- Proposed Pavement
- Proposed Median/Border
- Proposed Sidewalks/ Shared Use Path
- Proposed Traffic Separator
- Existing Drainage Structure

- Proposed Guardrail
- Potential Business Relocation
- Potential Contamination (Low)
- Potential Contamination (Medium or High)

H. W. Lochner, Inc.
 4300 W. Cypress St., Suite 500
 Tampa, Florida 33607
 FBPR Certificate of Auth. #894

Preferred Alternative

Sheet No.
5



SR 29 PD&E Study
 From Oil Well Road to SR 82
 FPID NO: 417540 1 22 01 / FAP NO: 3911 022 P

- Existing Right-of-Way
- Parcels
- - - - Proposed Right-of-Way
- Water/Canal
- Wetland

- ▨ Proposed Pond
- ▨ Potential Pond
- ▨ Potential Floodplain Compensation
- ▨ Traffic Signal

Legend

- ▨ Proposed Pavement
- ▨ Proposed Median/Border
- ▨ Proposed Sidewalks/ Shared Use Path
- ▨ Proposed Traffic Separator
- - - - Existing Drainage Structure

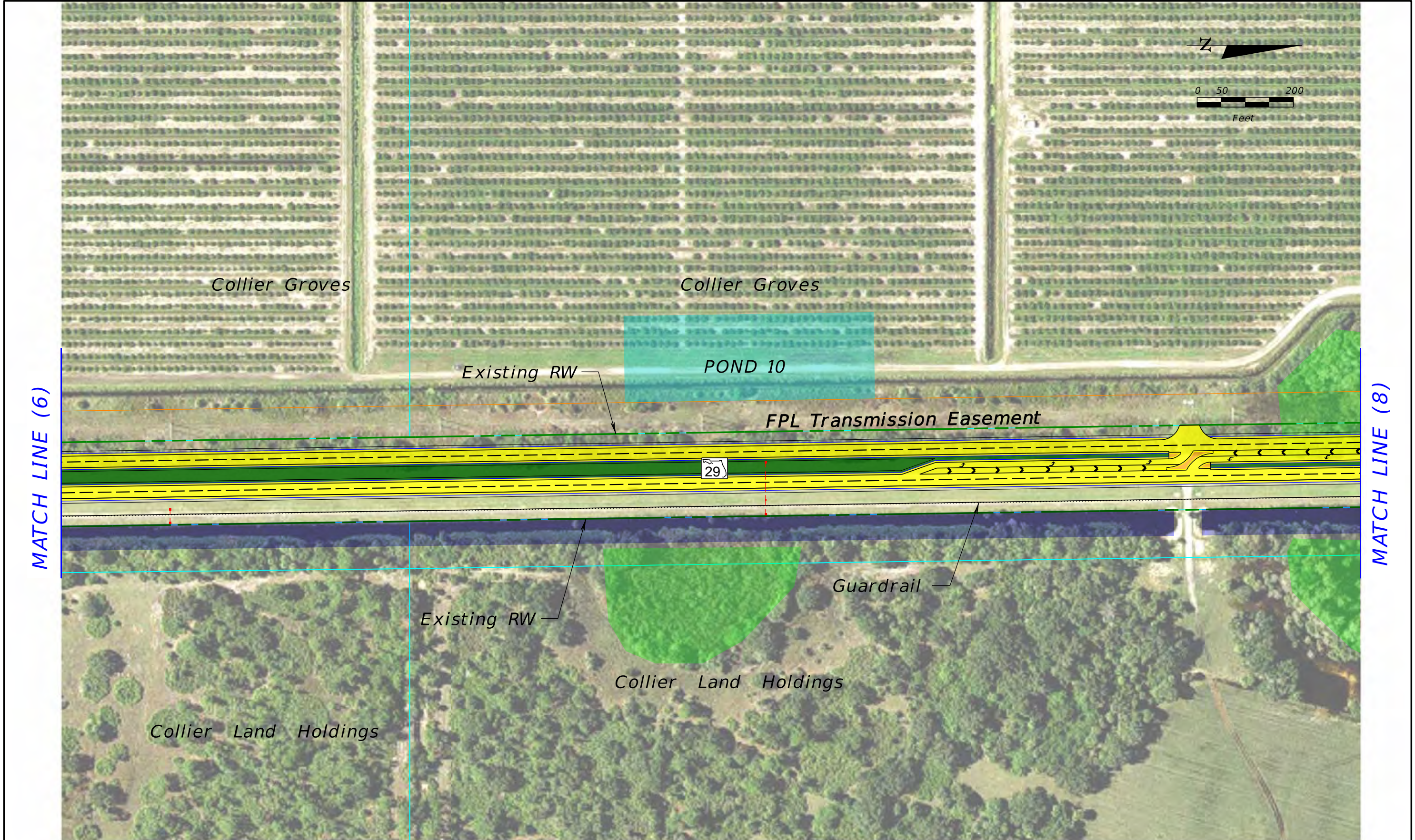
- Proposed Guardrail
- Potential Business Relocation
- ▲ Potential Contamination (Low)
- ▲ Potential Contamination (Medium or High)

H. W. Lochner, Inc.
 4300 W. Cypress St., Suite 500
 Tampa, Florida 33607
 FBPR Certificate of Auth. #894

Preferred Alternative

Sheet No.

6



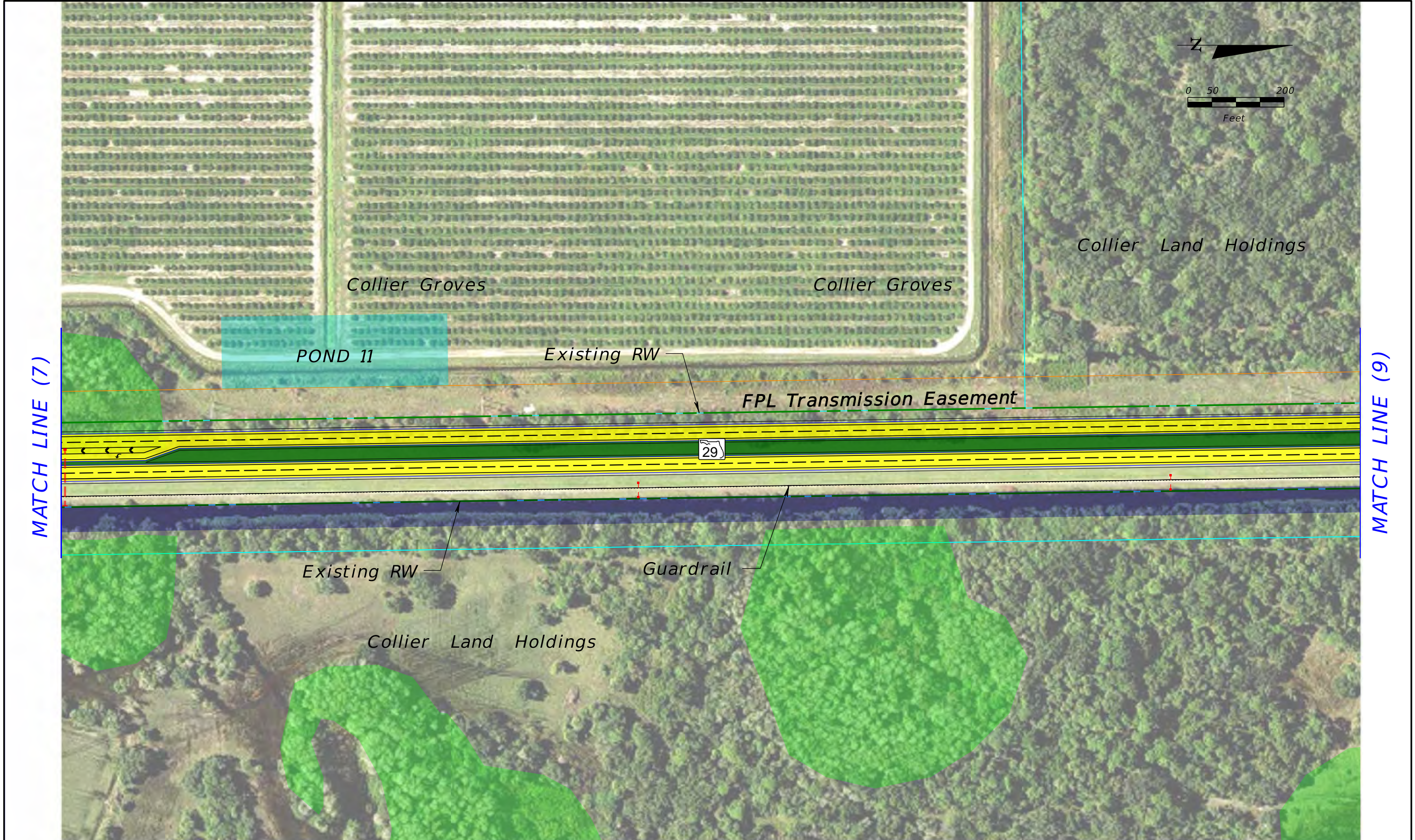
SR 29 PD&E Study
 From Oil Well Road to SR 82
 FPID NO: 417540 1 22 01 / FAP NO: 3911 022 P

Legend			
	Existing Right-of-Way		Proposed Pond
	Parcels		Potential Pond
	Proposed Right-of-Way		Potential Floodplain Compensation
	Water/Canal		Traffic Signal
	Wetland		Proposed Pavement
			Proposed Median/Border
			Proposed Sidewalks/ Shared Use Path
			Proposed Traffic Separator
			Existing Drainage Structure
			Proposed Guardrail
			Potential Business Relocation
			Potential Contamination (Low)
			Potential Contamination (Medium or High)

H. W. Lochner, Inc.
 4300 W. Cypress St., Suite 500
 Tampa, Florida 33607
 FBPR Certificate of Auth. #894

Preferred Alternative

Sheet No.
7



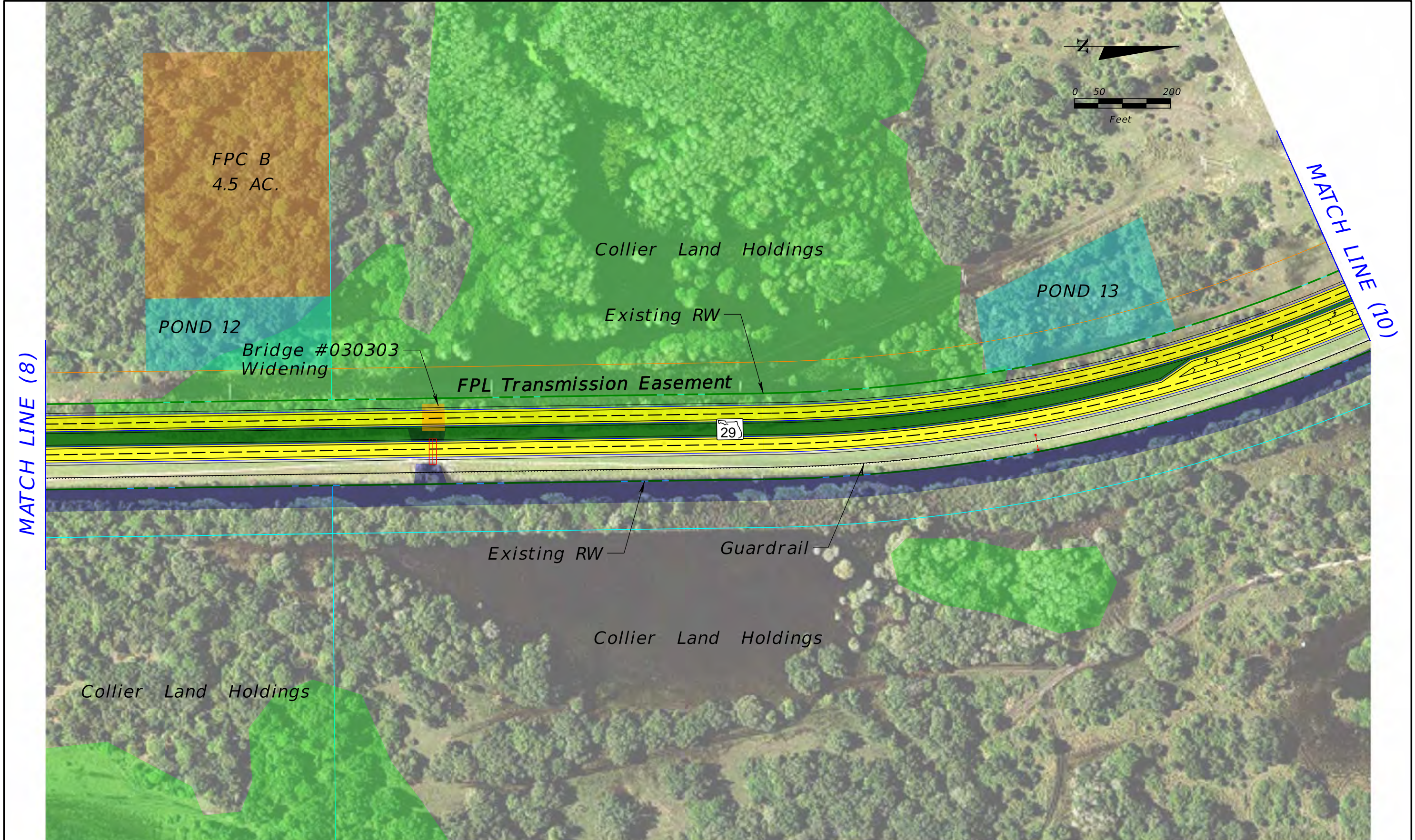
SR 29 PD&E Study
 From Oil Well Road to SR 82
 FPID NO: 417540 1 22 01 / FAP NO: 3911 022 P

Legend			
	Existing Right-of-Way		Proposed Pond
	Parcels		Potential Pond
	Proposed Right-of-Way		Potential Floodplain Compensation
	Water/Canal		Proposed Pavement
	Wetland		Proposed Median/Border
	Traffic Signal		Proposed Sidewalks/ Shared Use Path
			Proposed Traffic Separator
			Proposed Guardrail
			Potential Business Relocation
			Potential Contamination (Low)
			Potential Contamination (Medium or High)

H. W. Lochner, Inc.
 4300 W. Cypress St., Suite 500
 Tampa, Florida 33607
 FBPR Certificate of Auth. #894

Preferred Alternative

Sheet No.
8



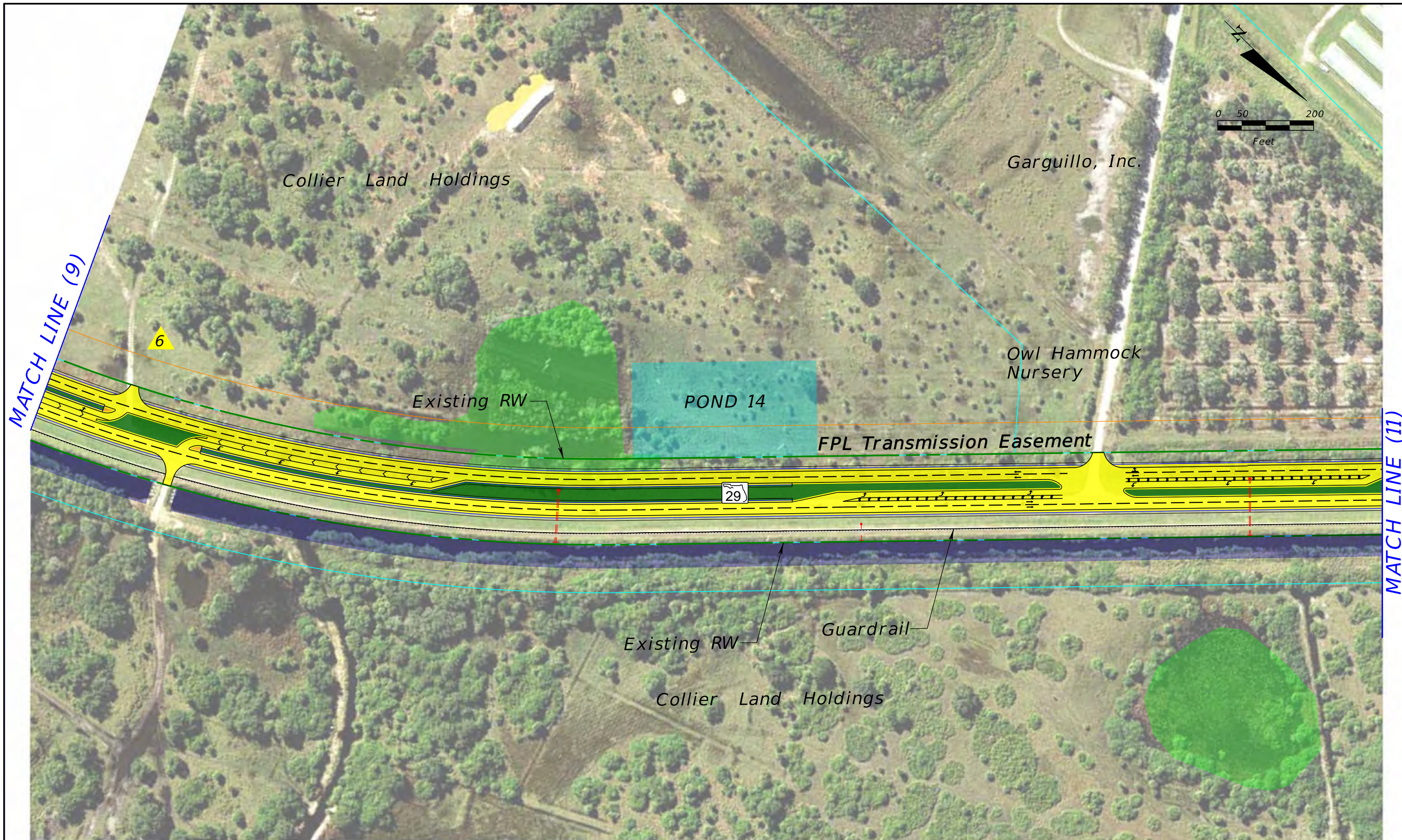
SR 29 PD&E Study
 From Oil Well Road to SR 82
 FPID NO: 417540 1 22 01 / FAP NO: 3911 022 P

Legend			
Existing Right-of-Way	Proposed Pond	Proposed Pavement	Proposed Guardrail
Parcels	Potential Pond	Proposed Median/Border	Potential Business Relocation
Proposed Right-of-Way	Potential Floodplain Compensation	Proposed Sidewalks/ Shared Use Path	Potential Contamination (Low)
Water/Canal	Traffic Signal	Proposed Traffic Separator	Potential Contamination (Medium or High)
Wetland		Existing Drainage Structure	

H. W. Lochner, Inc.
 4300 W. Cypress St., Suite 500
 Tampa, Florida 33607
 FBPR Certificate of Auth. #894

Preferred Alternative

Sheet No.
9



SR 29 PD&E Study
 From Oil Well Road to SR 82
 FPID NO: 417540 1 22 01 / FAP NO: 3911 022 P

- Existing Right-of-Way
- Parcels
- Proposed Right-of-Way
- Water/Canal
- Wetland

- Proposed Pond
- Potential Pond
- Potential Floodplain Compensation
- Traffic Signal

Legend

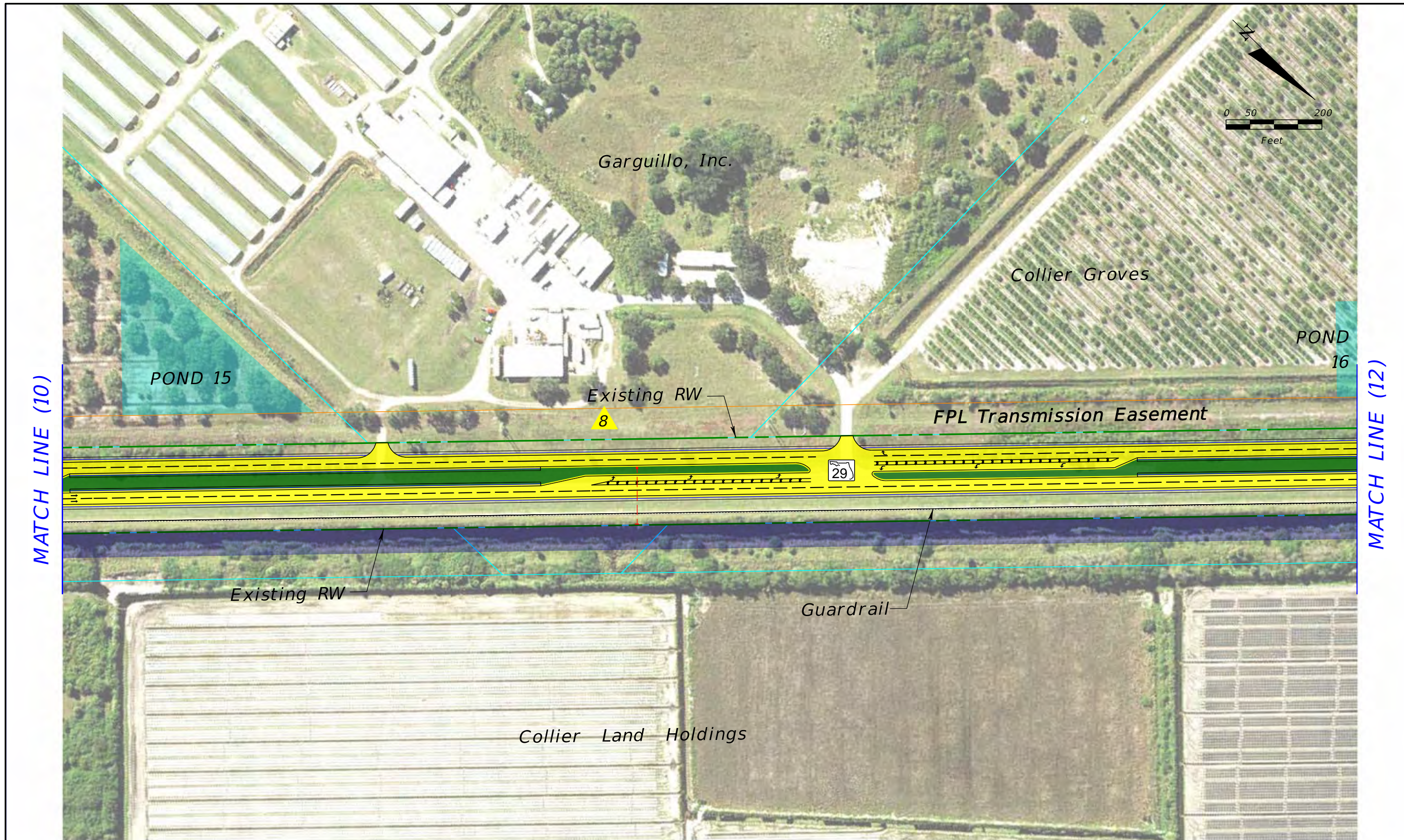
- Proposed Pavement
- Proposed Median/Border
- Proposed Sidewalks/ Shared Use Path
- Proposed Traffic Separator
- Existing Drainage Structure

- Proposed Guardrail
- Potential Business Relocation
- Potential Contamination (Low)
- Potential Contamination (Medium or High)

H. W. Lochner, Inc.
 4300 W. Cypress St., Suite 500
 Tampa, Florida 33607
 FBPR Certificate of Auth. #894

Preferred Alternative

Sheet No.
10



SR 29 PD&E Study
 From Oil Well Road to SR 82
 FPID NO: 417540 1 22 01 / FAP NO: 3911 022 P

- Existing Right-of-Way
- Parcels
- - - - Proposed Right-of-Way
- Water/Canal
- Wetland

- Proposed Pond
- Potential Pond
- Potential Floodplain Compensation
- Traffic Signal

Legend

- Proposed Pavement
- Proposed Median/Border
- Proposed Sidewalks/ Shared Use Path
- Proposed Traffic Separator
- - - - Existing Drainage Structure

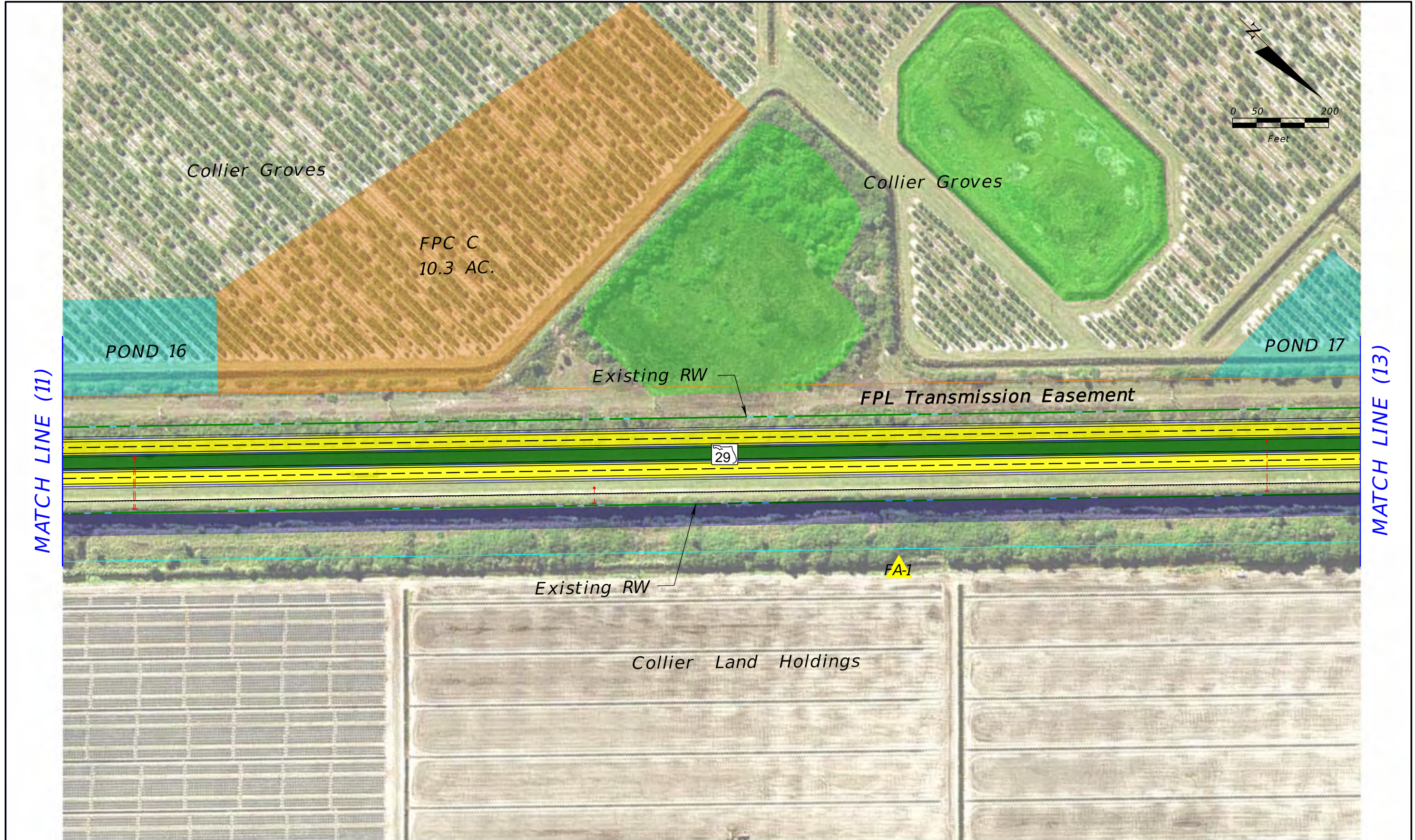
- Proposed Guardrail
- Potential Business Relocation
- ▲ Potential Contamination (Low)
- ▲ Potential Contamination (Medium or High)

H. W. Lochner, Inc.
 4300 W. Cypress St., Suite 500
 Tampa, Florida 33607
 FBPR Certificate of Auth. #894

Preferred Alternative

Sheet No.

11



Legend			
	Existing Right-of-Way		Proposed Pond
	Parcels		Potential Pond
	Proposed Right-of-Way		Potential Floodplain Compensation
	Water/Canal		Proposed Pavement
	Wetland		Proposed Median/Border
	Traffic Signal		Proposed Sidewalks/ Shared Use Path
			Proposed Traffic Separator
			Existing Drainage Structure
			Proposed Guardrail
			Potential Business Relocation
			Potential Contamination (Low)
			Potential Contamination (Medium or High)



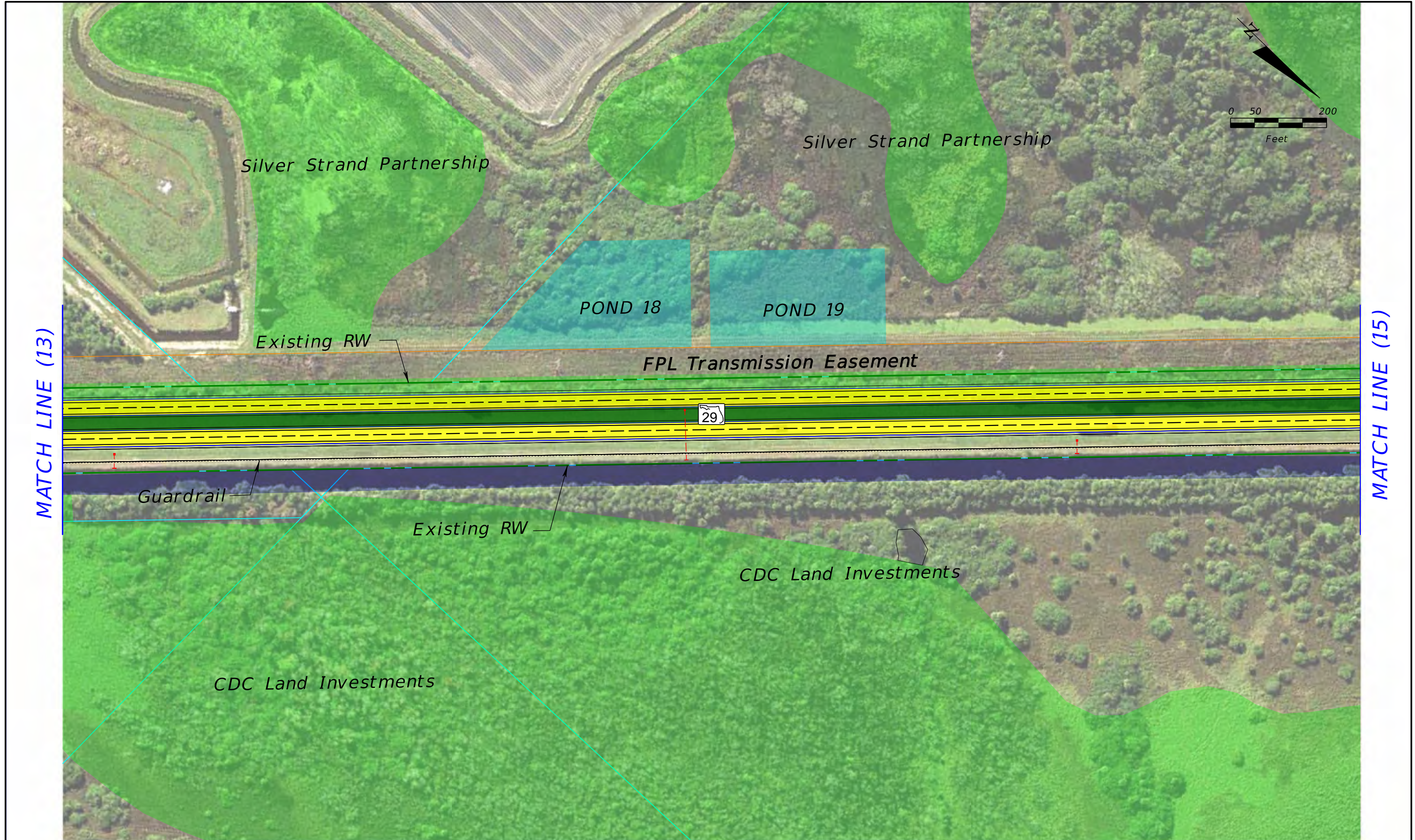
SR 29 PD&E Study
 From Oil Well Road to SR 82
 FPID NO: 417540 1 22 01 / FAP NO: 3911 022 P

Legend			
Existing Right-of-Way	Proposed Pond	Proposed Pavement	Proposed Guardrail
Parcels	Potential Pond	Proposed Median/Border	Potential Business Relocation
Proposed Right-of-Way	Potential Floodplain Compensation	Proposed Sidewalks/ Shared Use Path	Potential Contamination (Low)
Water/Canal	Traffic Signal	Proposed Traffic Separator	Potential Contamination (Medium or High)
Wetland		Existing Drainage Structure	

H. W. Lochner, Inc.
 4300 W. Cypress St., Suite 500
 Tampa, Florida 33607
 FBPR Certificate of Auth. #894

Preferred Alternative

Sheet No.
13



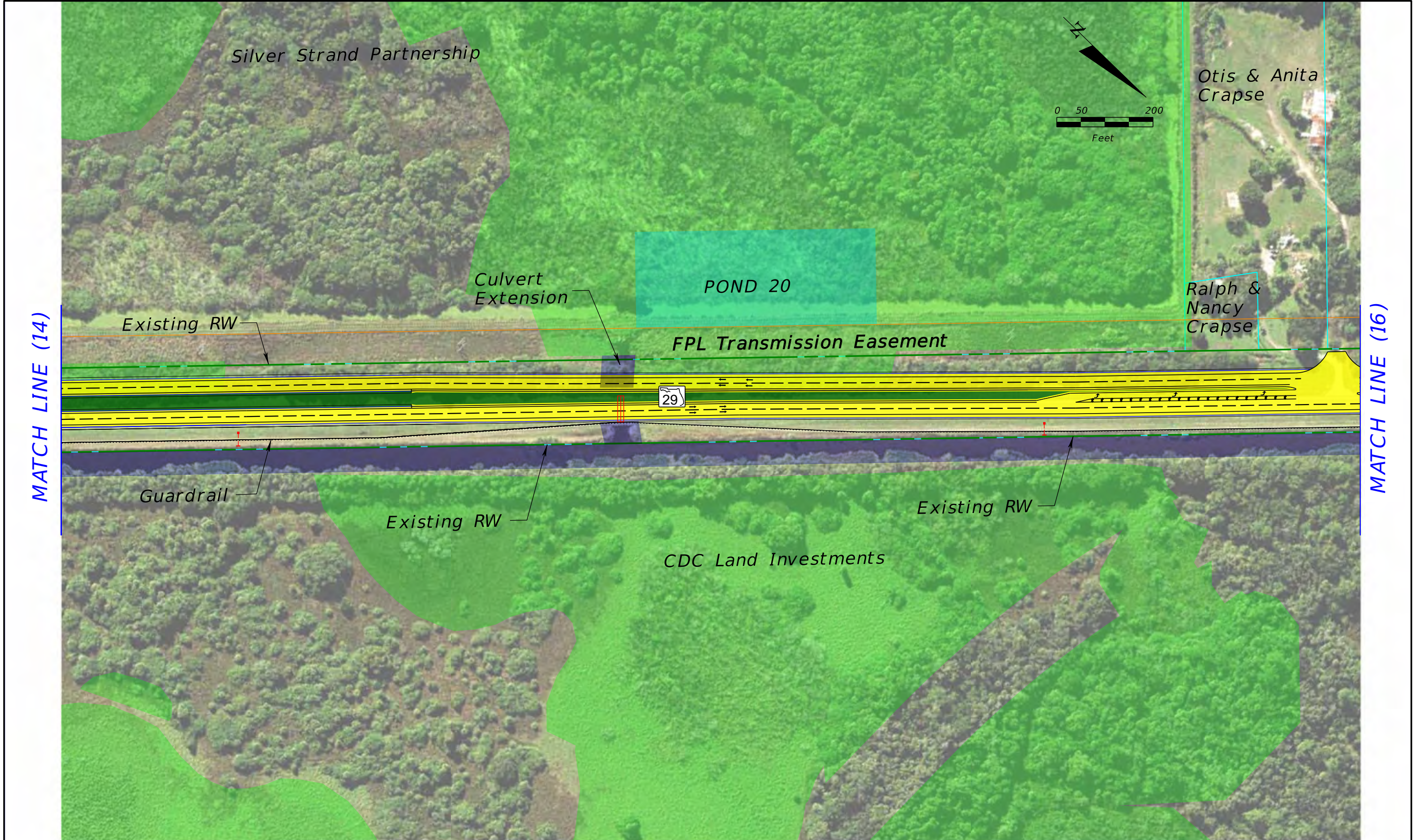
SR 29 PD&E Study
 From Oil Well Road to SR 82
 FPID NO: 417540 1 22 01 / FAP NO: 3911 022 P

Legend			
	Existing Right-of-Way		Potential Pond
	Proposed Right-of-Way		Potential Floodplain Compensation
	Water/Canal		Proposed Pavement
	Wetland		Proposed Median/Border
	Proposed Pond		Proposed Sidewalks/ Shared Use Path
	Potential Pond		Proposed Traffic Separator
	Potential Floodplain Compensation		Existing Drainage Structure
	Traffic Signal		Potential Business Relocation
			Potential Contamination (Low)
			Potential Contamination (Medium or High)
			Proposed Guardrail

H. W. Lochner, Inc.
 4300 W. Cypress St., Suite 500
 Tampa, Florida 33607
 FBPR Certificate of Auth. #894

Preferred Alternative

Sheet No.
14



SR 29 PD&E Study
 From Oil Well Road to SR 82
 FPID NO: 417540 1 22 01 / FAP NO: 3911 022 P

Legend			
	Existing Right-of-Way		Proposed Pond
	Parcels		Potential Pond
	Proposed Right-of-Way		Potential Floodplain Compensation
	Water/Canal		Traffic Signal
	Wetland		Proposed Pavement
			Proposed Median/Border
			Proposed Sidewalks/ Shared Use Path
			Proposed Traffic Separator
			Existing Drainage Structure
			Proposed Guardrail
			Potential Business Relocation
			Potential Contamination (Low)
			Potential Contamination (Medium or High)

H. W. Lochner, Inc.
 4300 W. Cypress St., Suite 500
 Tampa, Florida 33607
 FBPR Certificate of Auth. #894

Preferred Alternative

Sheet No.
15



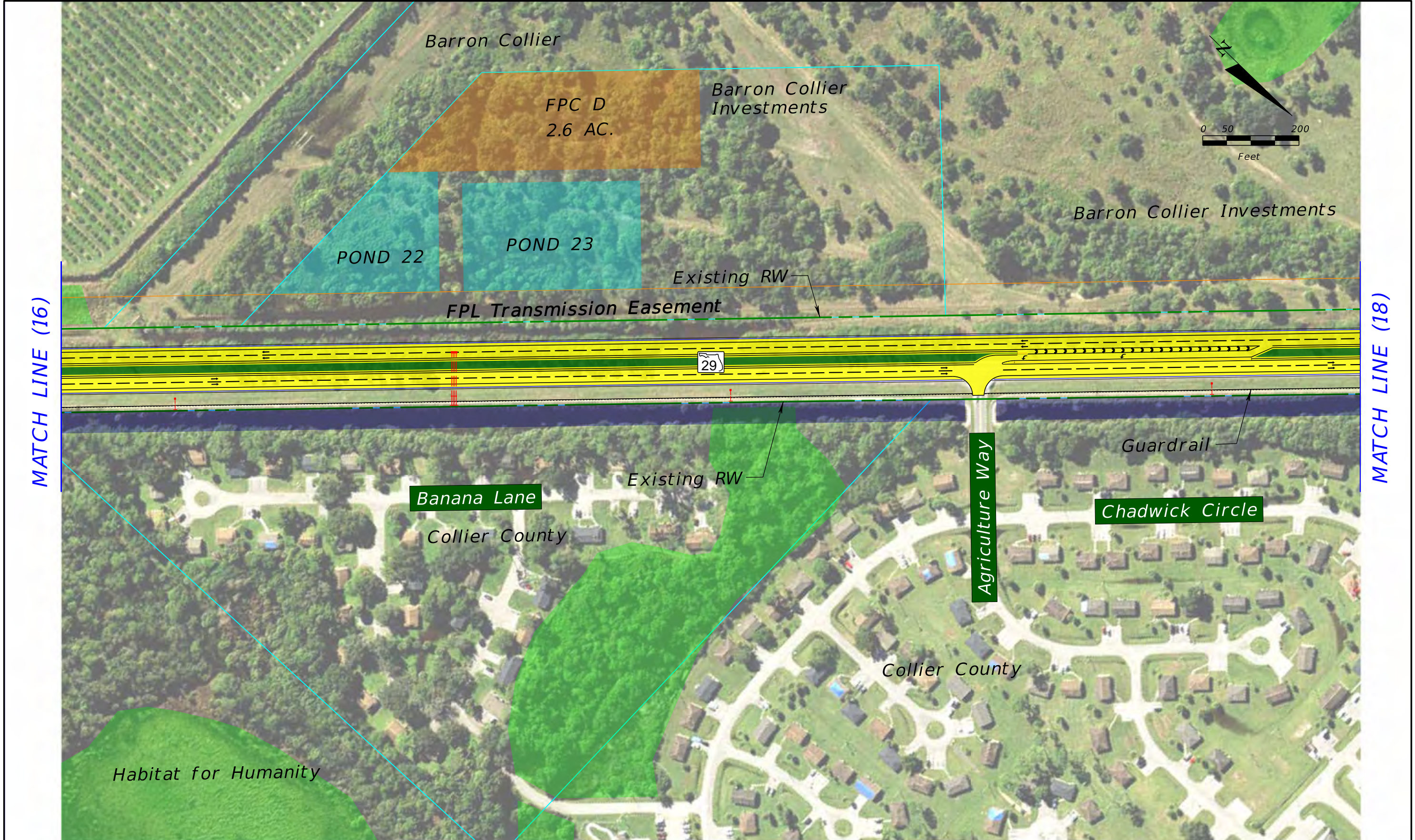
SR 29 PD&E Study
 From Oil Well Road to SR 82
 FPID NO: 417540 1 22 01 / FAP NO: 3911 022 P

Legend			
	Existing Right-of-Way		Proposed Pond
	Parcels		Potential Pond
	Proposed Right-of-Way		Potential Floodplain Compensation
	Water/Canal		Proposed Pavement
	Wetland		Proposed Median/Border
	Traffic Signal		Proposed Sidewalks/ Shared Use Path
			Proposed Traffic Separator
			Existing Drainage Structure
			Potential Business Relocation
			Potential Contamination (Low)
			Potential Contamination (Medium or High)

H. W. Lochner, Inc.
 4300 W. Cypress St., Suite 500
 Tampa, Florida 33607
 FBPR Certificate of Auth. #894

Preferred Alternative

Sheet No.
16



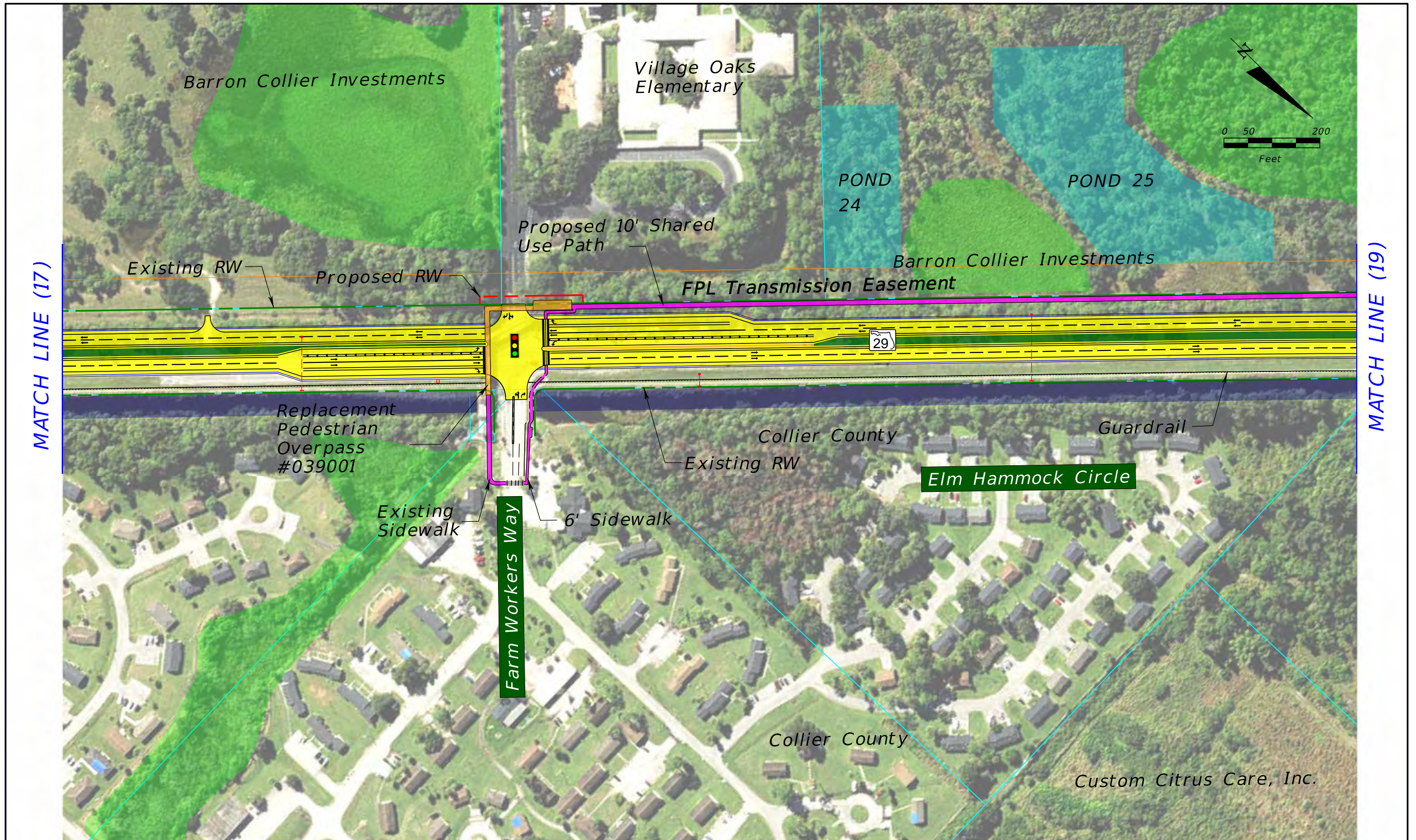
SR 29 PD&E Study
 From Oil Well Road to SR 82
 FPID NO: 417540 1 22 01 / FAP NO: 3911 022 P

Legend			
	Existing Right-of-Way		Proposed Pond
	Parcels		Potential Pond
	Proposed Right-of-Way		Potential Floodplain Compensation
	Water/Canal		Proposed Pavement
	Wetland		Proposed Median/Border
	Proposed Pond		Proposed Sidewalks/ Shared Use Path
	Potential Pond		Proposed Traffic Separator
	Potential Floodplain Compensation		Existing Drainage Structure
	Proposed Pavement		Proposed Guardrail
	Proposed Median/Border		Potential Business Relocation
	Proposed Sidewalks/ Shared Use Path		Potential Contamination (Low)
	Proposed Traffic Separator		Potential Contamination (Medium or High)
	Existing Drainage Structure		

H. W. Lochner, Inc.
 4300 W. Cypress St., Suite 500
 Tampa, Florida 33607
 FBPR Certificate of Auth. #894

Preferred Alternative

Sheet No.
17



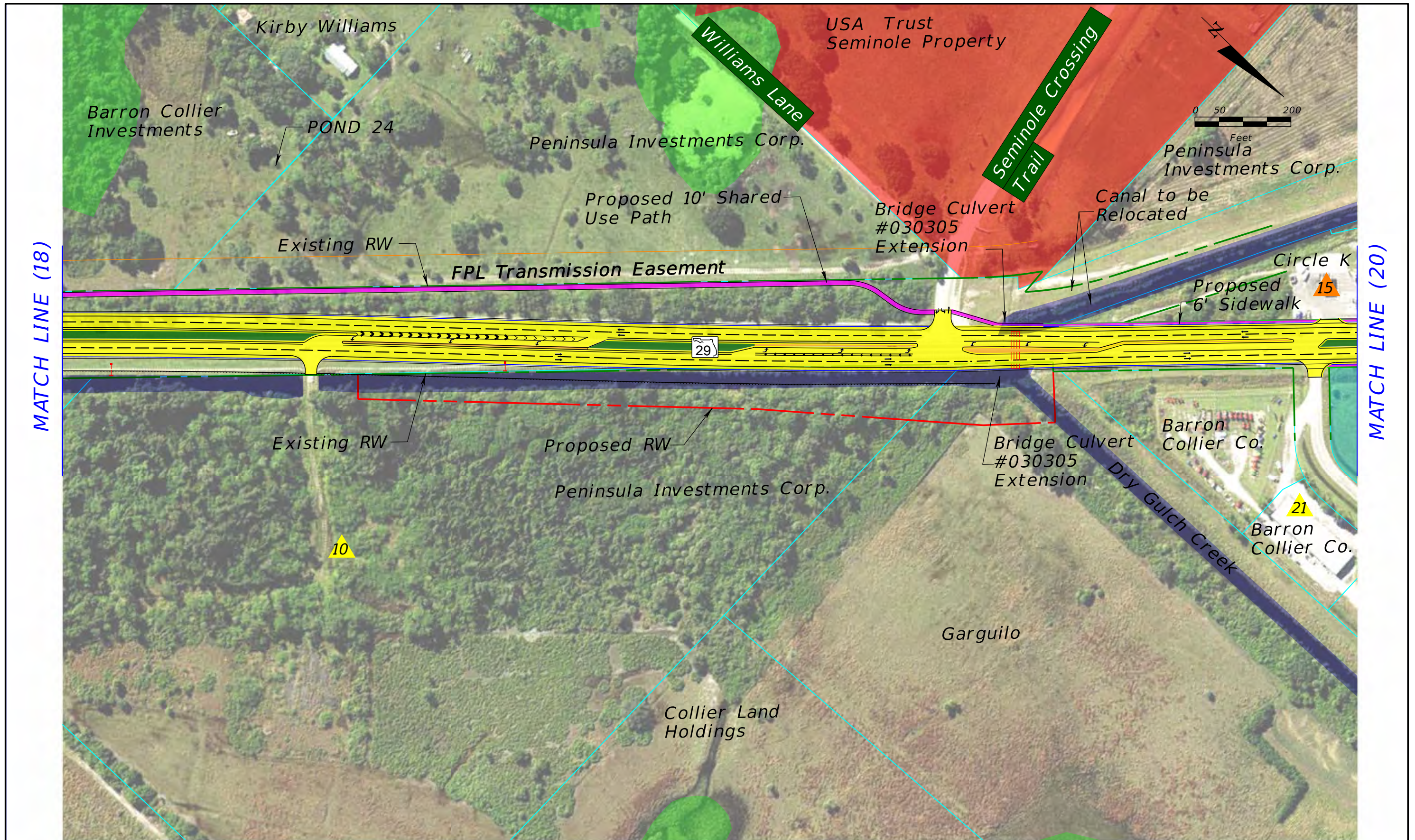
SR 29 PD&E Study
 From Oil Well Road to SR 82
 FPID NO: 417540 1 22 01 / FAP NO: 3911 022 P

Legend			
Existing Right-of-Way	Proposed Pond	Proposed Pavement	Proposed Guardrail
Parcels	Potential Pond	Proposed Median/Border	Potential Business Relocation
Proposed Right-of-Way	Potential Floodplain Compensation	Proposed Sidewalks/ Shared Use Path	Potential Contamination (Low)
Water/Canal	Traffic Signal	Proposed Traffic Separator	Potential Contamination (Medium or High)
Wetland		Existing Drainage Structure	

H. W. Lochner, Inc.
 4300 W. Cypress St., Suite 500
 Tampa, Florida 33607
 FBPR Certificate of Auth. #894

Preferred Alternative

Sheet No.
18



SR 29 PD&E Study
 From Oil Well Road to SR 82
 FPID NO: 417540 1 22 01 / FAP NO: 3911 022 P

Legend			
Existing Right-of-Way	Proposed Pond	Proposed Pavement	Proposed Guardrail
Parcels	Potential Pond	Proposed Median/Border	Potential Business Relocation
Proposed Right-of-Way	Potential Floodplain Compensation	Proposed Sidewalks/Shared Use Path	Potential Contamination (Low)
Water/Canal	Traffic Signal	Proposed Traffic Separator	Potential Contamination (Medium or High)
Wetland		Existing Drainage Structure	

H. W. Lochner, Inc.
 4300 W. Cypress St., Suite 500
 Tampa, Florida 33607
 FBPR Certificate of Auth. #894

Preferred Alternative

Sheet No.
19